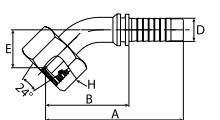
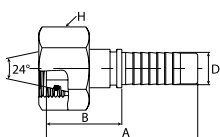
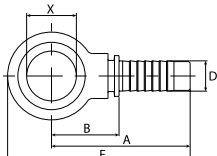
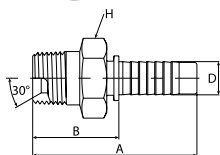


**VÝHODNÁ  
CENA!**

## Koncovky EXC pro hadice s 1/2-oplety



Koncovky s vnějším závitem BSP s kuželem 60°					
Obj. č.	Hadice D DN	Závit BSP	A (mm)	B (mm)	H (mm)
EG-M-146	6 mm	G 1/4"	53,5	25,5	19,0
EG-M-386	6 mm	G 3/8"	54,5	26,5	22,0
EG-M-3810	10 mm	G 3/8"	57,0	27,0	22,0
EG-M-1210	10 mm	G 1/2"	60,0	30,0	27,0
EG-M-1212	12 mm	G 1/2"	62,5	30,5	27,0
EG-M-5816	16 mm	G 5/8"	67,0	32,5	30,0
EG-M-3420	20 mm	G 3/4"	74,0	34,5	32,0
EG-M-1025	25 mm	G 1"	93,0	39,5	41,0

Úhlové koncovky banjo – pro duté šrouby s trubkovým závitem BSP						
Obj. č.	Hadice D DN	Pro závit BSP	X (mm)	F (mm)	A (mm)	B (mm)
EG-BJ-146	6 mm	G 1/4"	1/4"	61,5	49,5	21,5
EG-BJ-3810	10 mm	G 3/8"	3/8"	68,5	54,5	24,5
EG-BJ-1212	12 mm	G 1/2"	1/2"	79,0	61,5	29,5

Koncovky DIN 24°, lehká řada - vnitřní závit s o-kroužkem					
Obj. č.	Hadice D DN	Závit DIN 24°	A (mm)	B (mm)	H (mm)
EML-F-126	6 mm	M12 × 1,5	47,7	19,7	14,0
EML-F-146	6 mm	M14 × 1,5	53,8	25,8	17,0
EML-F-166	6 mm	M16 × 1,5	54,0	26,0	19,0
EML-F-186	6 mm	M18 × 1,5	54,5	26,5	22,0
EML-F-168	8 mm	M16 × 1,5	54,0	26,0	19,0
EML-F-188	8 mm	M18 × 1,5	54,5	26,5	22,0
EML-F-1610	10 mm	M16 × 1,5	56,5	26,5	19,0
EML-F-1810	10 mm	M18 × 1,5	56,5	26,5	22,0
EML-F-2210	10 mm	M22 × 1,5	57,0	27,0	27,0
EML-F-2212	12 mm	M22 × 1,5	60,1	28,1	22,0
EML-F-2612	12 mm	M26 × 1,5	60,3	28,3	32,0
EML-F-2616	16 mm	M26 × 1,5	62,8	28,3	32,0
EML-F-3020	20 mm	M30 × 2,0	70,6	31,1	36,0
EML-F-3625	25 mm	M36 × 2,0	86,2	32,7	41,0

Kolena 45°, lehká řada - vnitřní závit DIN 24°, s o-kroužkem						
Obj. č.	Hadice D DN	Závit DIN 24°	A (mm)	B (mm)	E (mm)	H (mm)
EML-F45-126	6 mm	M12 × 1,5	68,0	40,0	17,0	17,0
EML-F45-146	6 mm	M14 × 1,5	73,0	45,0	17,0	17,0
EML-F45-166	6 mm	M16 × 1,5	76,5	48,5	17,0	19,0
EML-F45-186	6 mm	M18 × 1,5	76,5	48,5	17,0	22,0
EML-F45-168	8 mm	M16 × 1,5	80,5	52,5	17,0	19,0
EML-F45-188	8 mm	M18 × 1,5	78,0	50,0	20,0	22,0
EML-F45-1610	10 mm	M16 × 1,5	85,0	55,0	20,0	19,0
EML-F45-1810	10 mm	M18 × 1,5	87,0	57,0	17,0	22,0
EML-F45-2210	10 mm	M22 × 1,5	89,0	59,0	19,0	27,0
EML-F45-2212	12 mm	M22 × 1,5	96,0	64,0	22,0	27,0
EML-F45-2612	12 mm	M26 × 1,5	97,0	65,0	26,0	32,0
EML-F45-2616	16 mm	M26 × 1,5	96,0	61,5	28,0	32,0
EML-F45-3020	20 mm	M30 × 2,0	102,5	63,0	27,0	36,0
EML-F45-3625	25 mm	M36 × 2,0	139,0	85,5	38,5	41,0