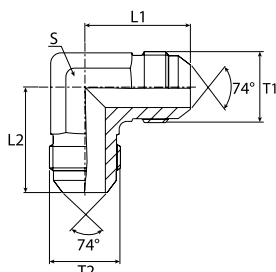
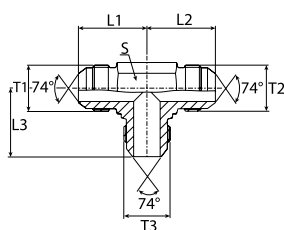


Hydraulické adaptéry

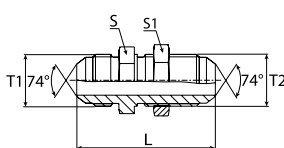
se závity JIC 37° dle norem ISO 8434-2 a SAE J514



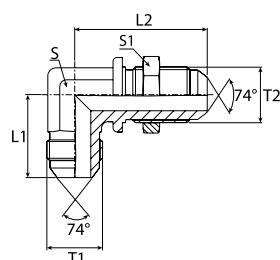
Úhlové adaptéry 90° s vnějšími závity JIC 37°					
Obj. č.	T1 závit JIC 37°	T2 závit JIC 37°	L1 (mm)	L2 (mm)	S (mm)
HJ17-716716	JIC 7/16"-20	JIC 7/16"-20	23	23	11
HJ17-1212	JIC 1/2"-20	JIC 1/2"-20	24	24	13
HJ17-916916	JIC 9/16"-18	JIC 9/16"-18	27	27	14
HJ17-916716	JIC 9/16"-18	JIC 7/16"-20	27	27	14
HJ17-3434	JIC 3/4"-16	JIC 3/4"-16	32	32	19
HJ17-34916	JIC 3/4"-16	JIC 9/16"-18	32	29	19
HJ17-7878	JIC 7/8"-14	JIC 7/8"-14	37	37	22
HJ17-7834	JIC 7/8"-14	JIC 3/4"-16	37	34	22
HJ17-17161716	JIC 1 1/16"-12	JIC 1 1/16"-12	42	42	27
HJ17-21162116	JIC 1 5/16"-12	JIC 1 5/16"-12	46	46	33



T-adaptéry s vnějšími závity JIC 37°							
Obj. č.	T1 závit JIC 37°	T2 závit JIC 37°	T3 závit JIC 37°	L1 (mm)	L2 (mm)	L3 (mm)	S (mm)
HJ18-716	JIC 7/16"-20	JIC 7/16"-20	JIC 7/16"-20	23	23	23	14
HJ18-12	JIC 1/2"-20	JIC 1/2"-20	JIC 1/2"-20	24	24	24	13
HJ18-916	JIC 9/16"-18	JIC 9/16"-18	JIC 9/16"-18	27	27	27	14
HJ18-34	JIC 3/4"-16	JIC 3/4"-16	JIC 3/4"-16	32	32	32	19
HJ18-78	JIC 7/8"-14	JIC 7/8"-14	JIC 7/8"-14	37	37	37	22
HJ18-1716	JIC 1 1/16"-12	JIC 1 1/16"-12	JIC 1 1/16"-12	42	42	42	27
HJ18-2116	JIC 1 5/16"-12	JIC 1 5/16"-12	JIC 1 5/16"-12	46	46	46	33



Přímé adaptéry do panelu - s vnějšími závity JIC 37°					
Obj. č.	T1 závit JIC 37°	T2 závit JIC 37°	L (mm)	S (mm)	S1 (mm)
HJ19-716	JIC 7/16"-20	JIC 7/16"-20	53	17	17
HJ19-12	JIC 1/2"-20	JIC 1/2"-20	53	19	19
HJ19-916	JIC 9/16"-18	JIC 9/16"-18	55	22	22
HJ19-34	JIC 3/4"-16	JIC 3/4"-16	62	24	24
HJ19-78	JIC 7/8"-14	JIC 7/8"-14	70	30	30
HJ19-1716	JIC 1 1/16"-12	JIC 1 1/16"-12	79	36	36
HJ19-2116	JIC 1 5/16"-12	JIC 1 5/16"-12	80	41	41



Úhlové adaptéry 90° do panelu - s vnějšími závity JIC 37°						
Obj. č.	T1 závit JIC 37°	T2 závit JIC 37°	L1 (mm)	L2 (mm)	S (mm)	S1 (mm)
HJ20-716	JIC 7/16"-20	JIC 7/16"-20	25	40	11	17
HJ20-12	JIC 1/2"-20	JIC 1/2"-20	27	44	13	19
HJ20-916	JIC 9/16"-18	JIC 9/16"-18	28	46	14	22
HJ20-34	JIC 3/4"-16	JIC 3/4"-16	36	54	19	24
HJ20-78	JIC 7/8"-14	JIC 7/8"-14	40	61	22	30
HJ20-1716	JIC 1 1/16"-12	JIC 1 1/16"-12	45	68	27	36
HJ20-2116	JIC 1 5/16"-12	JIC 1 5/16"-12	49	71	33	41